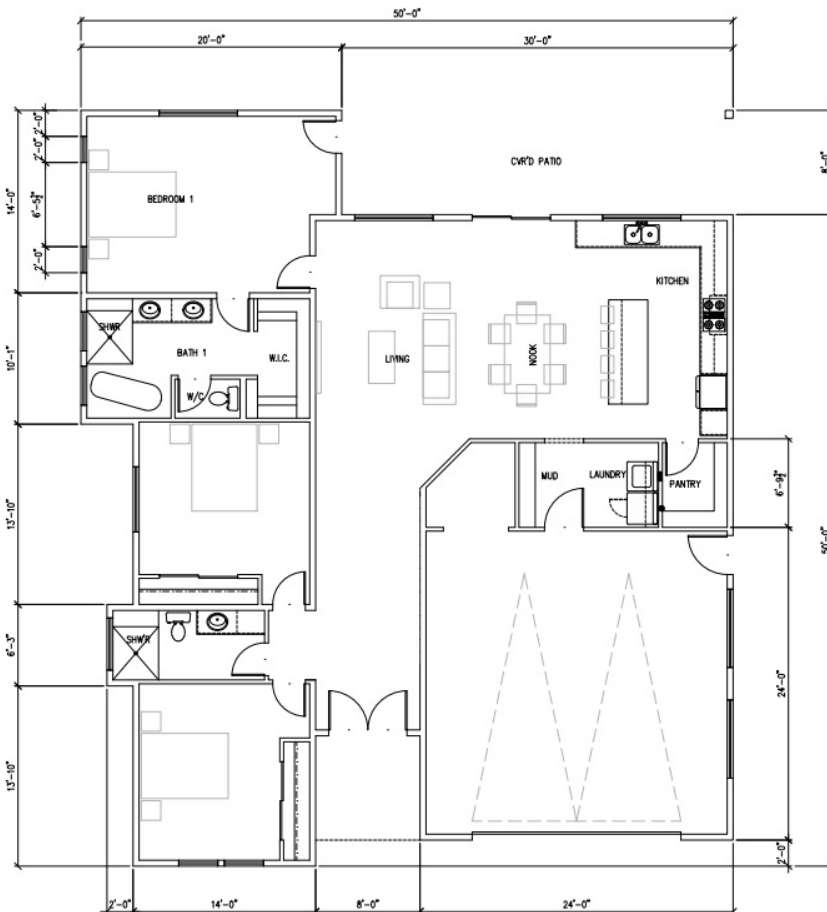


SUMMIT



3 OR 4 BED + 2 BATH + GARAGE
LIVABLE SQ FT: 1,793
GARAGE SQ FT: 561

SUBJECT TO CHANGE AND CORRECTION.
CURRENTLY AVAILABLE IN UTAH, IDAHO, COLORADO, WYOMING,
MONTANA, ARIZONA, NEVADA



PANELIZED KIT PRICING: SUMMIT

ARCHITECTURAL DESIGN.....STARTING AT : **\$2,500**

Work directly with our design team to refine your layout, review mark-ups, and shape the concept of your home before engineering begins. This phase is for early design development only and does not include permit-ready documents.

FULL SUBMITTAL ENGINEERING.....**\$9,560**

THIS STAGE INCLUDES:

Detailed floor plans:
The floor plans are designed by builders who understand how to reduce waste and simplify the construction process.

Structural engineering:
Designed specifically for your location – snow loads, seismic, frost depth, etc.

Res-check energy submittal:
Energy compliance information that may be required by the building department.

Site plan:
This is specific for your lot (geotechnical and soils engineering not included).

PANELIZED SHELL KIT.....**\$102,900**

ADDED COST FOR 35 TO 100 PSF SNOW LOAD.....**\$10,290**

ADDED COST FOR UP TO 250 PSF SNOW LOAD.....**\$20,580**

WHATS INCLUDED:

- Pre-framed exterior wall panels.
- Pre-framed interior wall panels.
- ZIP System® sheathing and ZIP System® tape for a fully integrated weather-resistant barrier.
- Pre-framed stairs and other structural framing components.
- Pre-cut structural beams and posts.
- Roof panels or engineered trusses.
- Lumber to finish the trusses and roofing—sheathing, blocking, sub-fascia, etc.
- Synthetic roof underlayment for durable, weather-resistant roof protection.
- All labor to set the panels and complete the framing and roofing dry-in.

SHIPPING FROM CEDAR CITY, UTAH.....**\$16-\$25 PER MILE**

Shipping costs vary based on mileage and the number of trailers required for delivery. Projects located more than 500 miles from our factory incur additional long-distance freight charges.

OPTIONAL WINDOWS & DOORS PACKAGES

INCLUDES SHIPPING, HANDLING & INSTALLATION

Standard window and door packages are priced based on your selected model and base specifications. Upgrades to size, style, color, brand, or configuration will result in additional charges. All customizations must be approved before engineering begins to avoid delays or redesign costs.

CASCADE WINPRO VINYL.....**\$9,100**

CLAY EXT/INT.....**\$9,100**

BLACK EXT/WHITE INT.....**\$13,750**

Cascade WinPro vinyl windows. Durable, low-maintenance vinyl with energy-efficient dual pane glass — a cost-effective option with clean modern lines. -Includes all windows per standard plans with 3'0" x 6'8" exterior doors.

ANDERSEN 100 SERIES WINDOWS UPGRADE.....**\$24,800**

Anderson 100 series black composite windows made of Fibrex composite materials. 2x stronger and 12X thicker finish than painted vinyl. -Includes all windows per standard plans with 3'0" x 6'8" exterior doors