



POLARIS  
MODULAR

## Orion Townhome

Estimated Time  
3-4 Months

Price  
Starting at \$1,900,000

Project Type  
Multi Family

Size  
12,000 Square Feet

### Elevated Design. Efficient Living. Modular Built.

The **Orion Townhome** brings together modern architecture and modular precision to create a scalable, stylish housing solution for today's growing communities. Whether you're a developer, investor, or municipality, Orion is built to meet the demand for high-density living without sacrificing comfort, curb appeal, or build speed.

With its clean lines, dynamic facade, and smart three-story layout, the Orion Townhome fits perfectly into urban infill sites, suburban townhome rows, or large-scale build-to-rent communities.

#### Key Features:

##### Three-Story Modular Construction

Each unit is designed for vertical efficiency — offering maximum square footage on a minimal footprint. Modular construction allows for faster installation, streamlined permitting, and consistent quality at scale.

##### Private Ground-Level Entry

Distinct vertical columns and recessed entryways give every unit its

own identity. The inviting front elevation adds visual interest and strong neighborhood presence.

##### Rear-Facing Private Garage

A built-in two-car garage on the ground floor enhances security and utility, while maintaining a clean, pedestrian-friendly front side.

##### Contemporary Exterior Aesthetic

- Mixed material palette for dimension and contrast
- Vertical and horizontal siding layouts
- Large windows designed to balance natural light and privacy

##### Made to Scale, Designed to Live In

Inside, the Orion offers a flexible and open layout with options for:

- 2-3 bedrooms
- Open-concept kitchens and living areas
- In-unit laundry and upstairs flex space

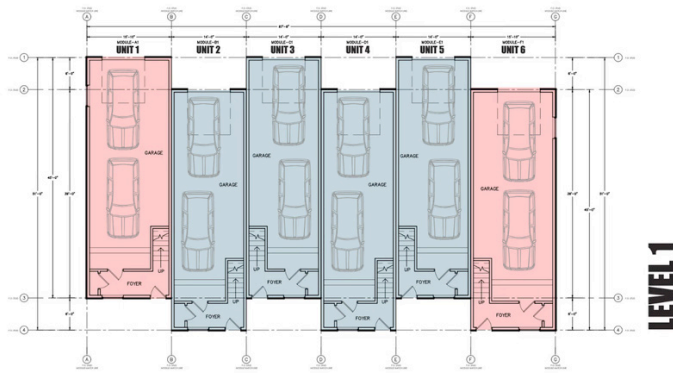
Ideal for professionals, families, or renters who value modern design and energy-efficient living.

##### Perfect For:

- Build-for-rent portfolios
- Urban redevelopment projects
- Attainable housing communities
- Modular multifamily scaling

Offered by:





**MOD MOD**  
HOMES.COM

**FASTER CONSTRUCTION TIMES | LOWER COSTS | LESS WASTE**  
**REDUCED IMPACT | ADVANCED TECHNOLOGY**

[www.modmodhomes.com](http://www.modmodhomes.com)