



POLARIS
MODULAR

Meridian Townhome

Estimated Time
3-4 Months

Price
Starting at \$1,900,000

Project Type
Multi Family

Size
12,000 Square Feet

Modern Design Meets Scalable Living

The **Meridian Townhome** blends sleek urban design with modular efficiency, making it a perfect fit for developers, municipalities, and investors looking to maximize density without compromising style or livability.

Crafted with a clean vertical layout, bold façade materials, and smart spatial planning, the Meridian is ideal for both infill projects and large-scale community developments.

Key Features:

Three-Story Modular Construction

Built across three levels, each unit maximizes square footage while maintaining a compact footprint — perfect for urban lots or suburban master plans.

Private Entry for Each Unit

Each front-facing unit includes its own covered entry, accent columns, and modern landscaping elements for a welcoming street presence.

Ground-Level Garage Integration

Each townhome includes a private garage with rear access, ensuring both security and convenience without sacrificing front elevation aesthetics

Contemporary Architecture

- Clean rooflines
- Mixed cladding textures (metal, fiber cement, or lap siding options)
- Vertical window arrays that provide natural light without excess exposure

Built for Scale, Designed for Comfort

The Meridian Townhome is engineered with modular precision, enabling:

- Faster build times
- Consistent quality control
- Easier permitting in multiple regions

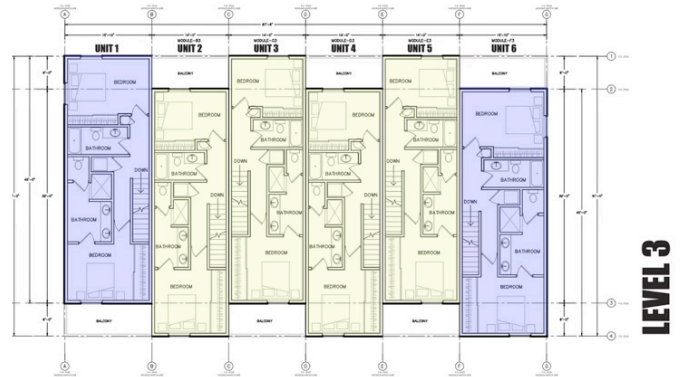
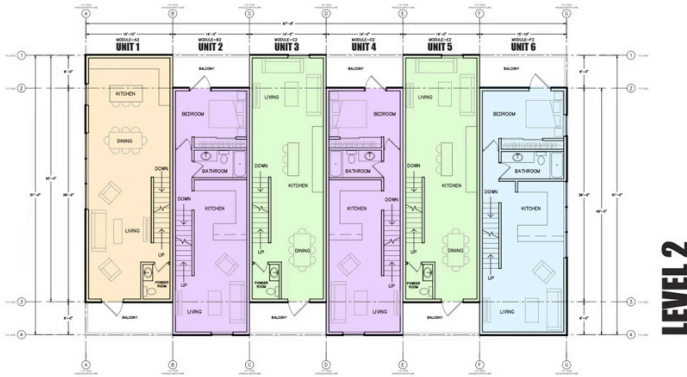
Inside, flexible layouts can accommodate 2–3 bedrooms, open-concept kitchens, and upstairs laundry — perfect for families, young professionals, or rental tenants.

Versatile Applications

- Build-for-rent communities
- Urban infill housing
- Workforce or attainable housing
- Small-lot subdivision projects

Offered by:





FASTER CONSTRUCTION TIMES | LOWER COSTS | LESS WASTE
REDUCED IMPACT | ADVANCED TECHNOLOGY

www.modmodhomes.com