



The Four Pines (4-Plex)

Estimated Time
8-10 Weeks

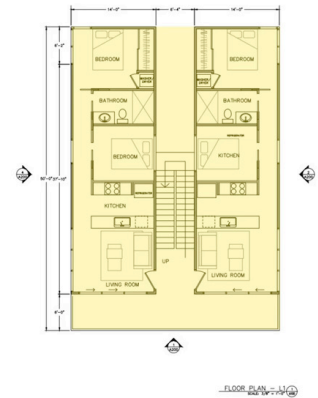
Price
Starting at \$900,000

Project Type
Multi Family

Size
2,660 Square Feet

The Four Pines: Modern Living, Multiplied

The **Four Pines** takes the architectural DNA of the Riverbend XL and transforms it into a sophisticated fourplex—delivering the same striking design, expansive glazing, and warm interior finishes, now in a multi-family format. Designed for urban infill, resort communities, or build-to-rent applications, the Four Pines offers a modern housing solution that balances style with scalability. Unlike the Riverbend XL, the Four Pines is not a Park Model RV. It is a permanent multi-family structure, purpose-built for developers seeking high-end, compact living units with strong visual impact and space efficiency. Each unit is thoughtfully laid out to maximize natural light and privacy, making it ideal for extended stays, long-term rentals, or premium workforce housing.



Offered by:

